

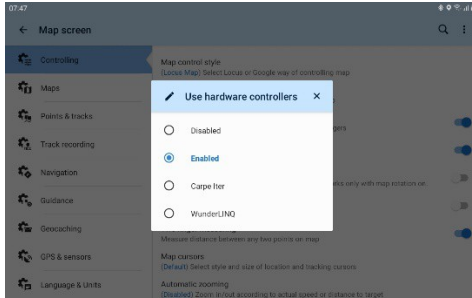
Setup Locus Map for Remotek One

This procedure is tested on Locus Map 4.17.2

1. Enable hardware controllers

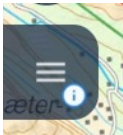
Select Settings > Controlling > Map screen > Use hardware controllers

Set Enabled

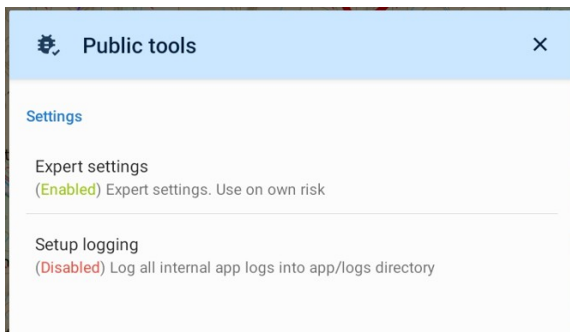


2. Enable Expert settings

Click and hold the menu button to open the dialogue where Expert settings can be enabled



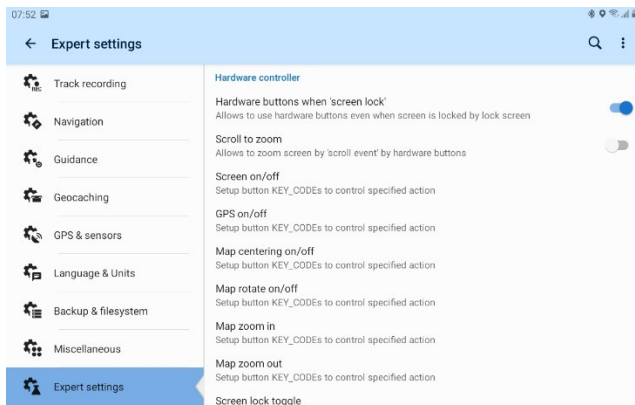
Click Expert settings



3. Update Locus Map key codes to match the Remotek One key codes

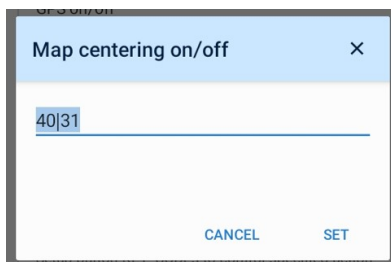
Select Settings > Expert settings

Scroll down till you see Hardware controller



Click Map centering on/off

Enter code 40|31



Click Map zoom in

Enter code 70|24

Click Map zoom out

Enter code 69|25